

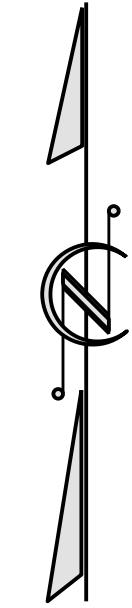
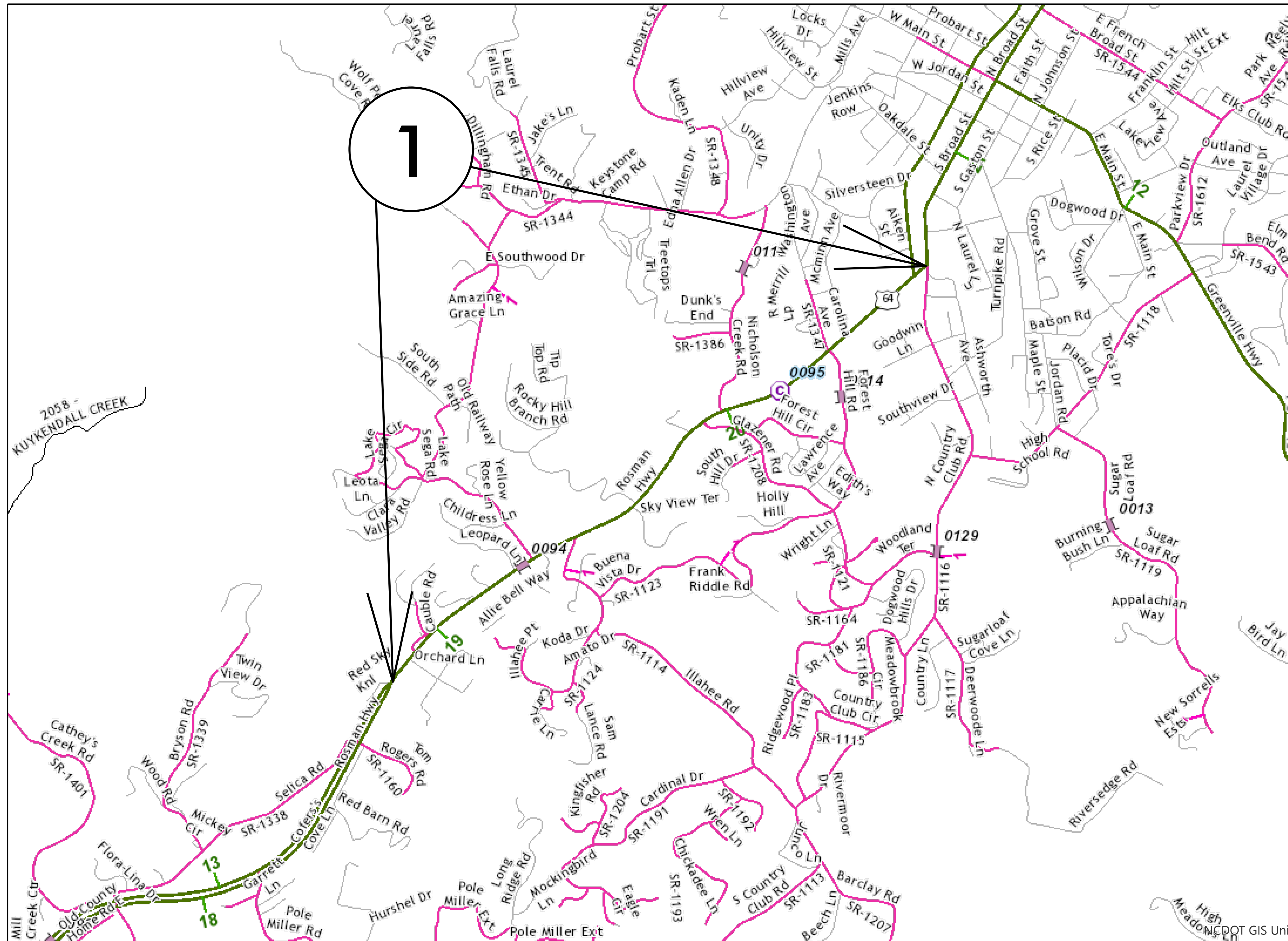
**This electronic collection of documents is provided
for the convenience of the user
and is Not a Certified Document –**

**The documents contained herein were originally issued
and sealed by the individuals whose names and license
numbers appear on each page, on the dates appearing
with their signature on that page.**

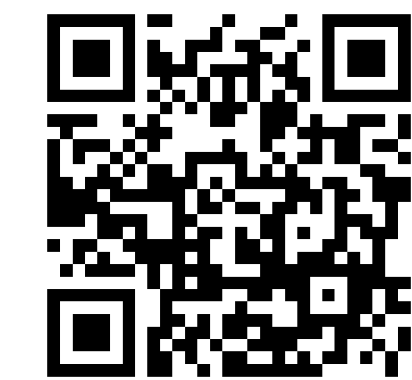
**This file or an individual page
shall not be considered a certified document.**

| | | | |
|-----------------|-----------------------------|-------------|--------------|
| STATE | STATE PROJECT REFERENCE NO. | SHEET NO. | TOTAL SHEETS |
| N.C. | 2022CPT.14.16.10881 | 1 | 13 |
| STATE PROJ. NO. | F. A. PROJ. NO. | DESCRIPTION | |
| | | | |

TRANSYLVANIA COUNTY



MAP 1



BEG

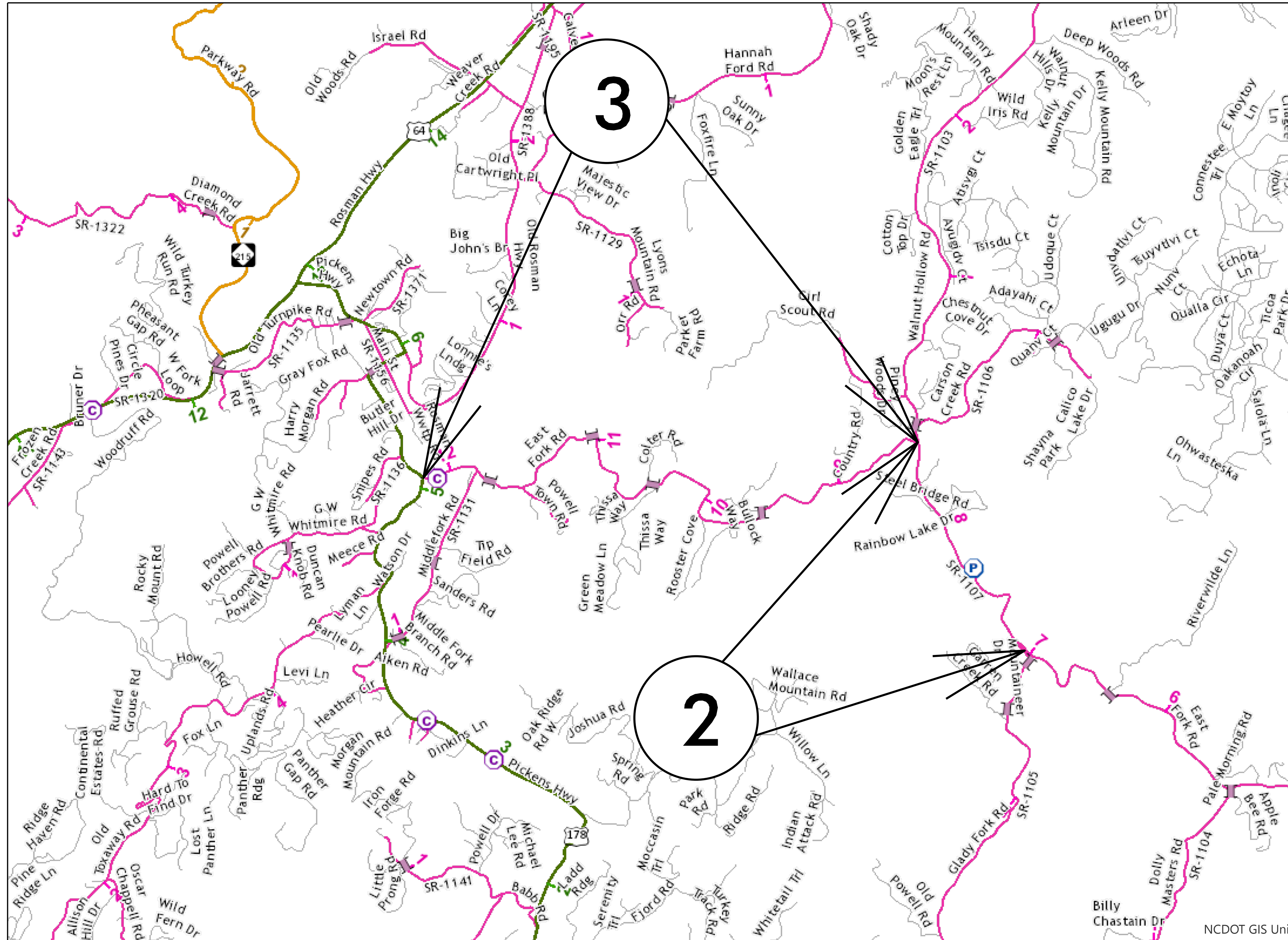


END

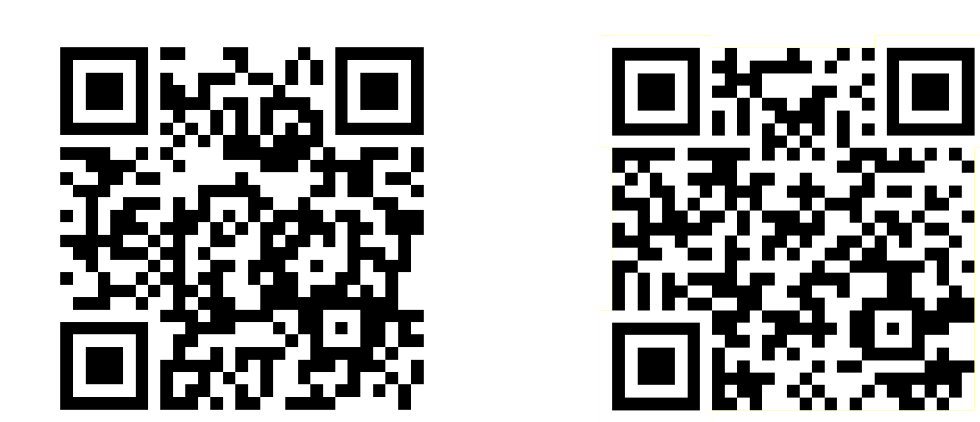
CONTRACT: DN00787

| | | | |
|-----------------|-----------------------------|-------------|--------------|
| STATE | STATE PROJECT REFERENCE NO. | SHEET NO. | TOTAL SHEETS |
| N.C. | 2022CPT.14.16.20881 | 2 | |
| STATE PROJ. NO. | F. A. PROJ. NO. | DESCRIPTION | |
| | | | |

TRANSYLVANIA COUNTY

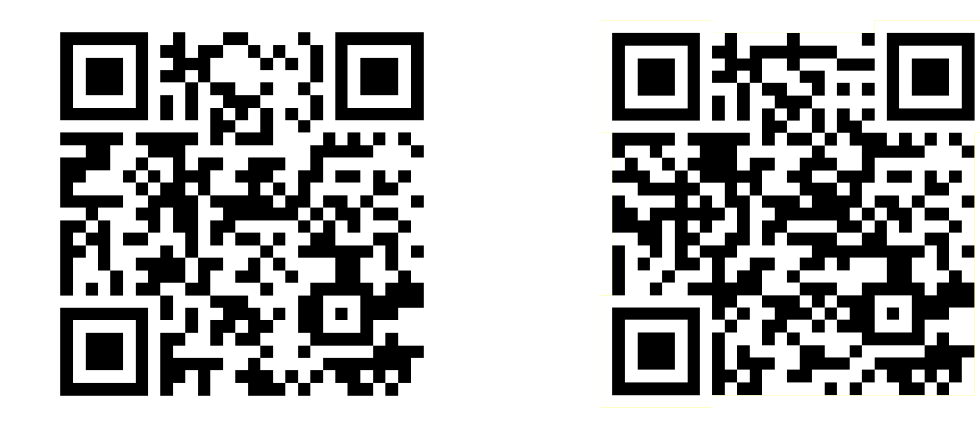


MAP 2



BEG END

MAP 3



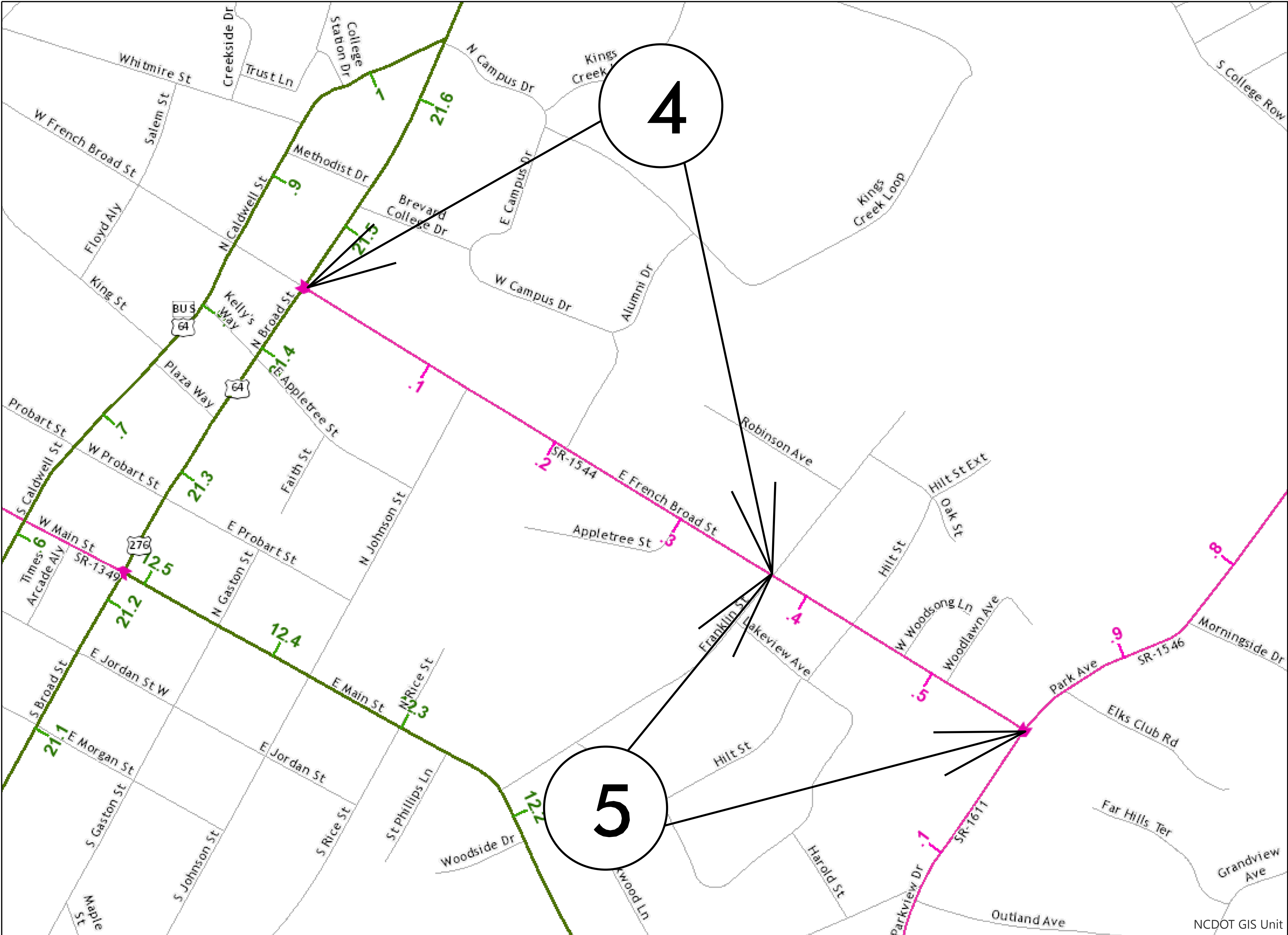
BEG END

CONTRACT: DN00787

09/08/09

TRANSYLVANIA COUNTY

| | | | |
|-----------------|-----------------------------|-------------|--------------|
| STATE | STATE PROJECT REFERENCE NO. | SHEET NO. | TOTAL SHEETS |
| N.C. | 2022CPT.14.16.20881 | 3 | |
| STATE PROJ. NO. | F. A. PROJ. NO. | DESCRIPTION | |
| | | | |



MAP 4



BEG

END

MAP 5



BEG

END

CONTRACT: DN00787

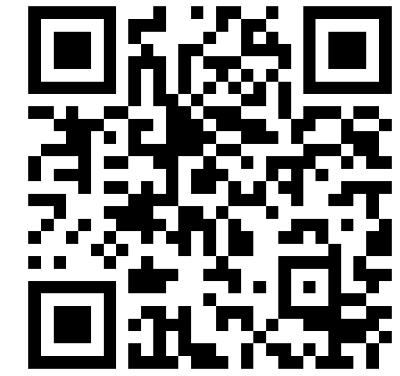
09/08/09

TRANSYLVANIA COUNTY

| | | | |
|-----------------|-----------------------------|-------------|--------------|
| STATE | STATE PROJECT REFERENCE NO. | SHEET NO. | TOTAL SHEETS |
| N.C. | 2022CPT.14.16.20881 | 4 | |
| STATE PROJ. NO. | F. A. PROJ. NO. | DESCRIPTION | |
| | | | |
| | | | |



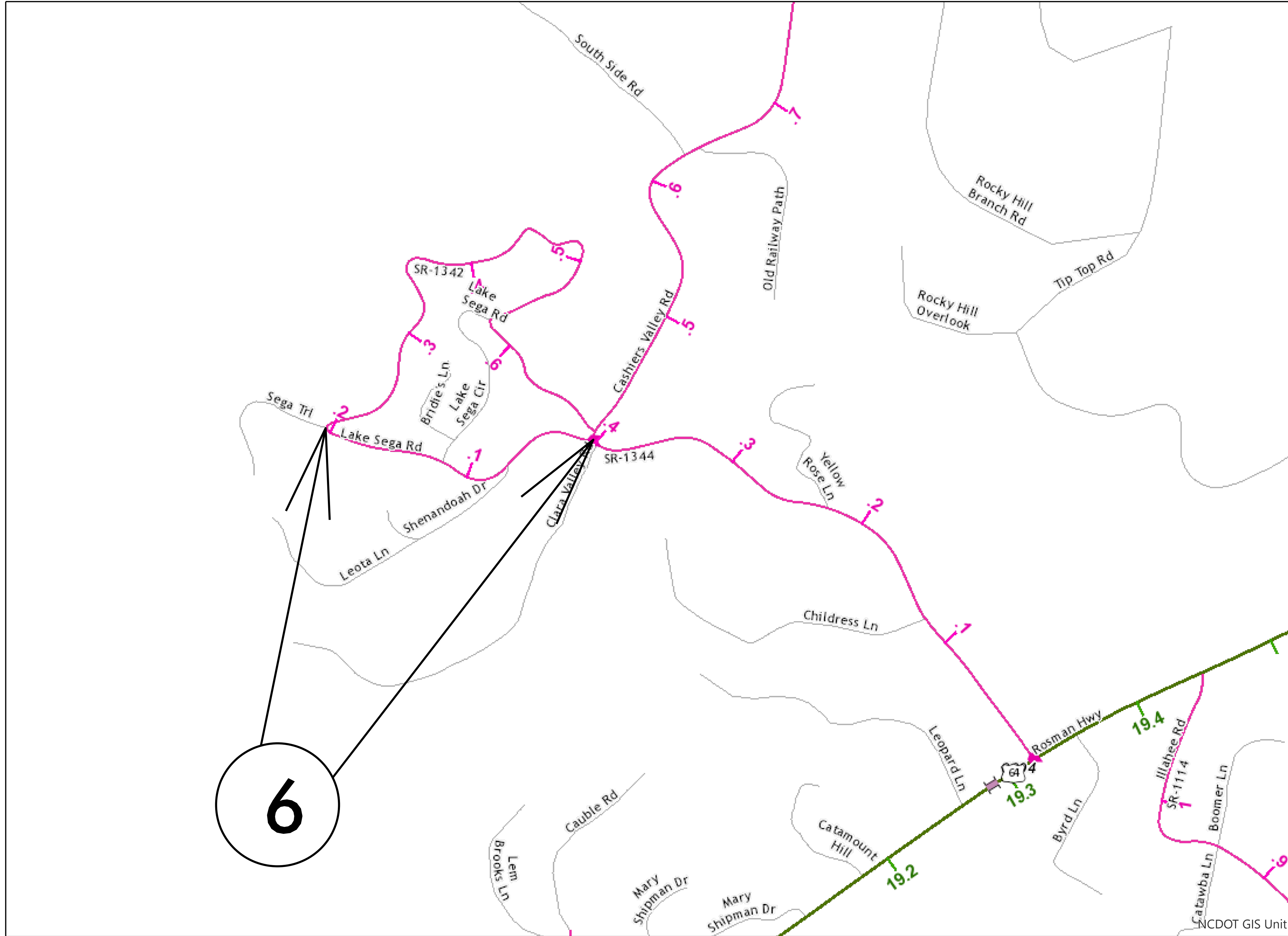
MAP 6



BEG



END

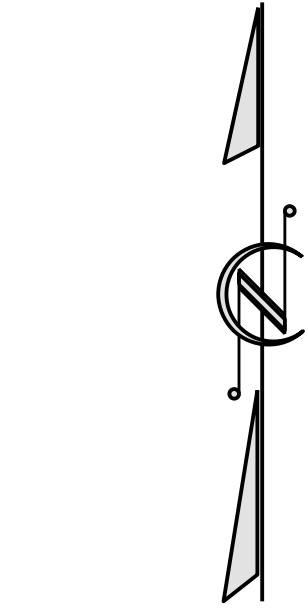
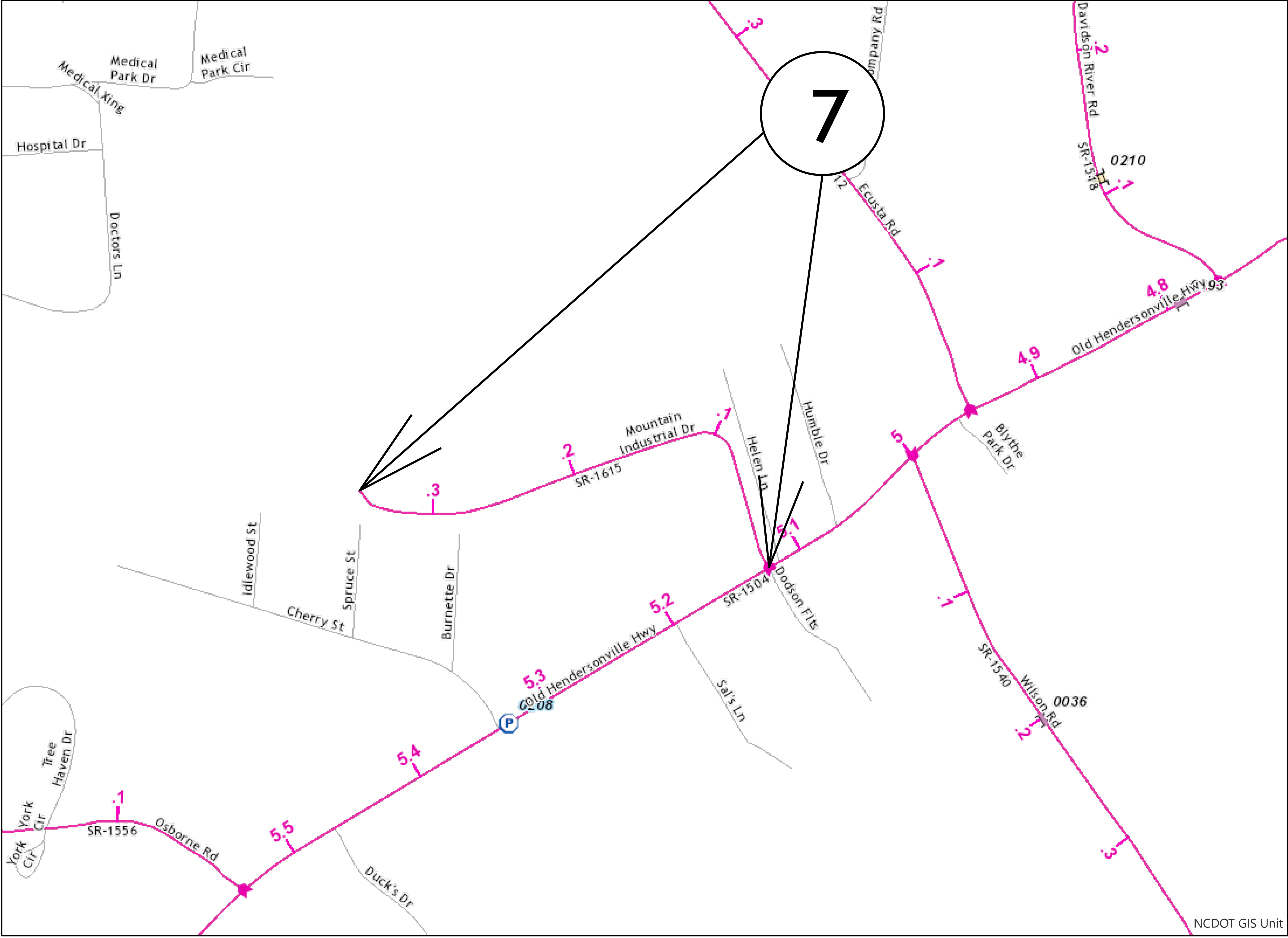


CONTRACT: DN00787

09/08/09

TRANSYLVANIA COUNTY

| | | | |
|-----------------|-----------------------------|-------------|--------------|
| STATE | STATE PROJECT REFERENCE NO. | SHEET NO. | TOTAL SHEETS |
| N.C. | 2022CPT.14.16.20881 | 5 | |
| STATE PROJ. NO. | F. A. PROJ. NO. | DESCRIPTION | |
| | | | |



MAP 7



BEG



END

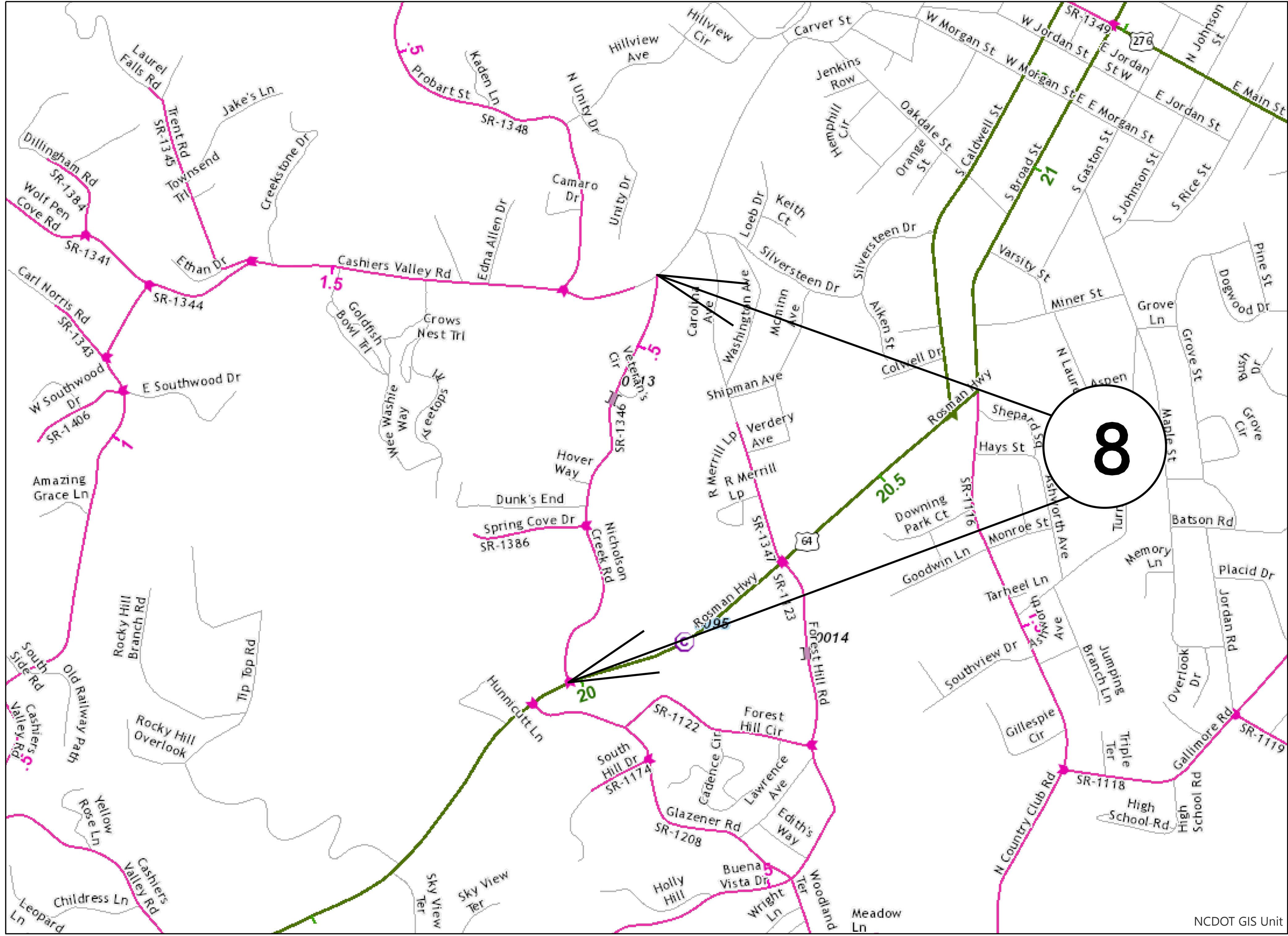
CONTRACT: DN00787

NCDOT GIS Unit

09/08/09

TRANSYLVANIA COUNTY

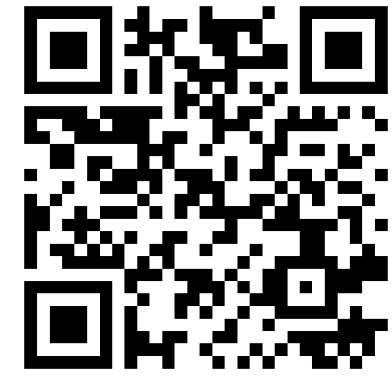
| | | | |
|-----------------|-----------------------------|-------------|--------------|
| STATE | STATE PROJECT REFERENCE NO. | SHEET NO. | TOTAL SHEETS |
| N.C. | 2022CPT.14.16.20881 | 6 | |
| STATE PROJ. NO. | F. A. PROJ. NO. | DESCRIPTION | |
| | | | |



MAP 8



BEG

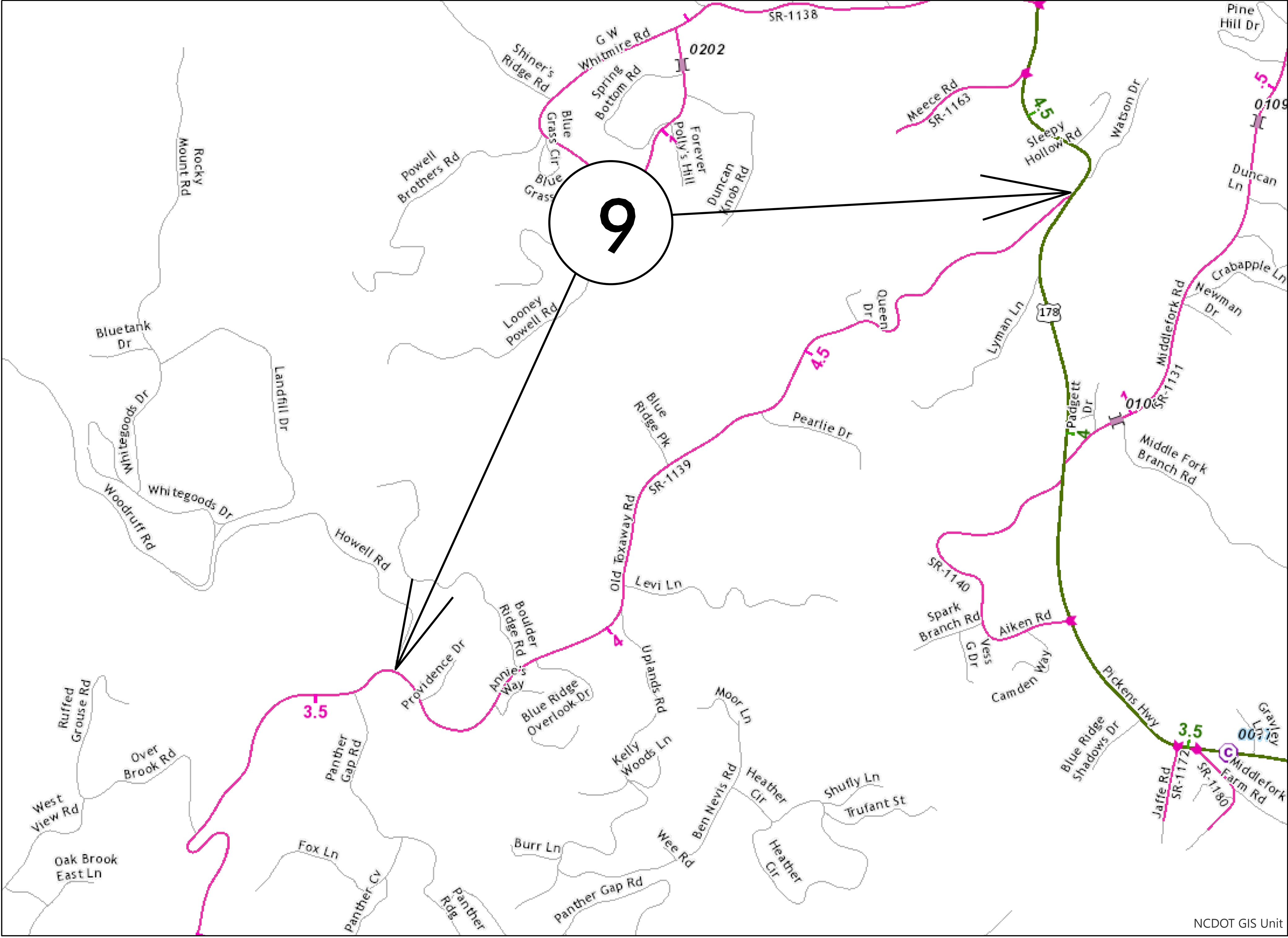


END

CONTRACT: DN00787

TRANSYLVANIA COUNTY

| | | | |
|-----------------|-----------------------------|-------------|--------------|
| STATE | STATE PROJECT REFERENCE NO. | SHEET NO. | TOTAL SHEETS |
| N.C. | 2022CPT.14.16.20881 | 7 | |
| STATE PROJ. NO. | F. A. PROJ. NO. | DESCRIPTION | |
| | | | |



MAP 9



BEG



END

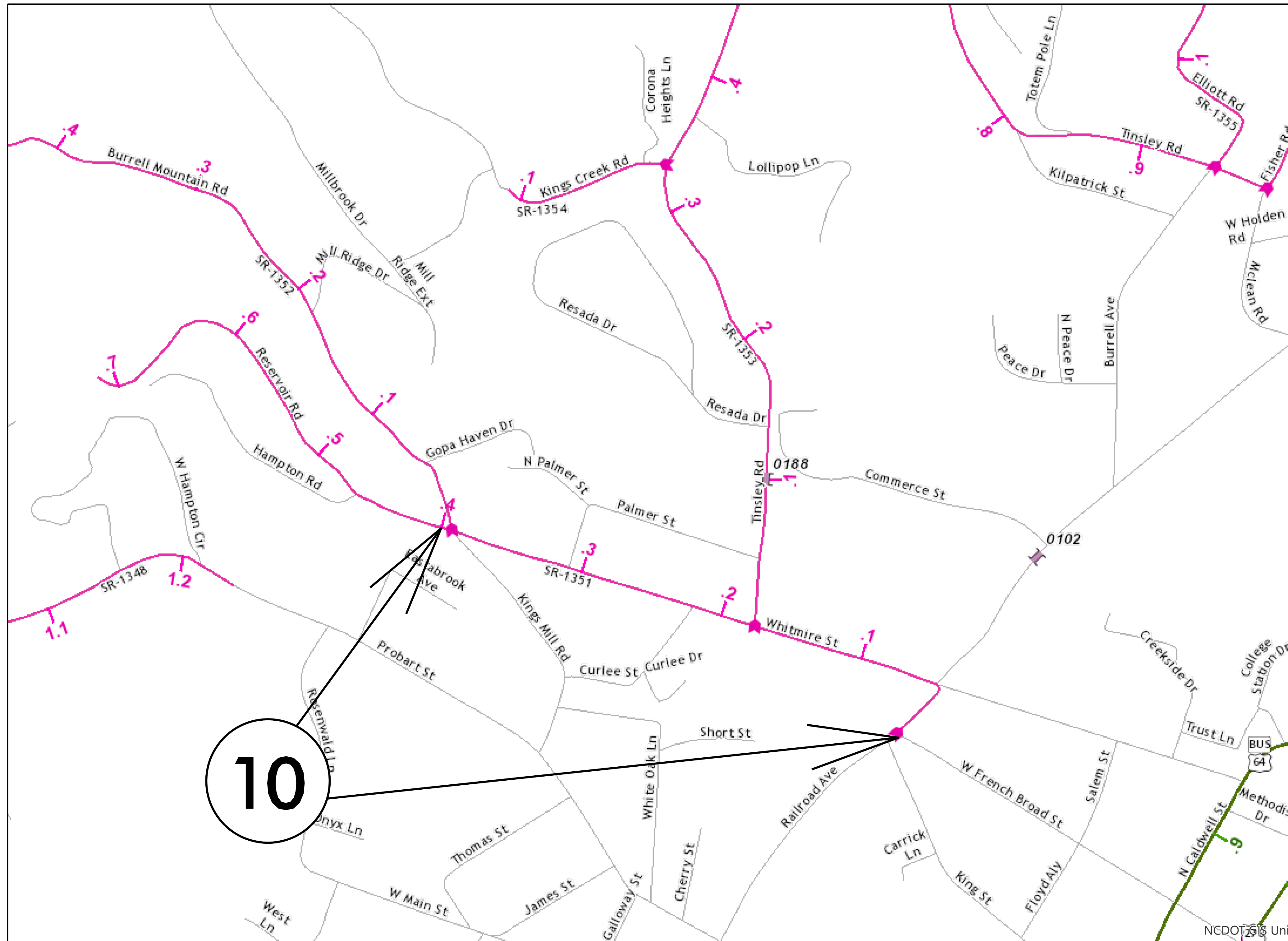
NCDOT GIS Unit

CONTRACT: DN00787

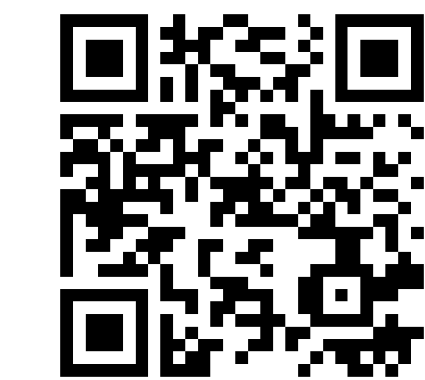
09/08/09

TRANSYLVANIA COUNTY

| | | | |
|-----------------|-----------------------------|-------------|--------------|
| STATE | STATE PROJECT REFERENCE NO. | SHEET NO. | TOTAL SHEETS |
| N.C. | 2022CPT.14.16.20881 | 8 | |
| STATE PROJ. NO. | F. A. PROJ. NO. | DESCRIPTION | |
| | | | |



MAP 10



BEG



END

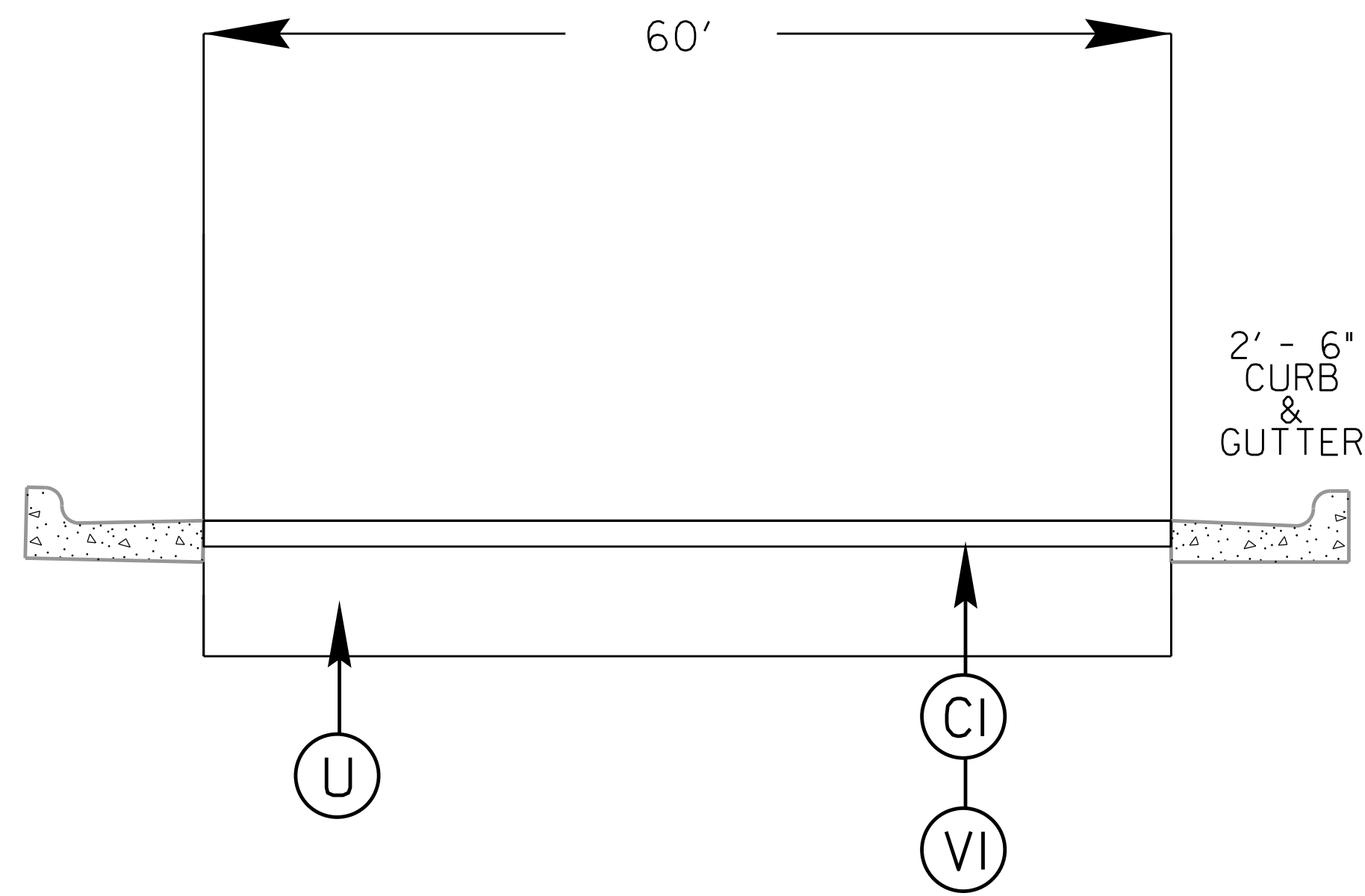
CONTRACT: DN00787

10

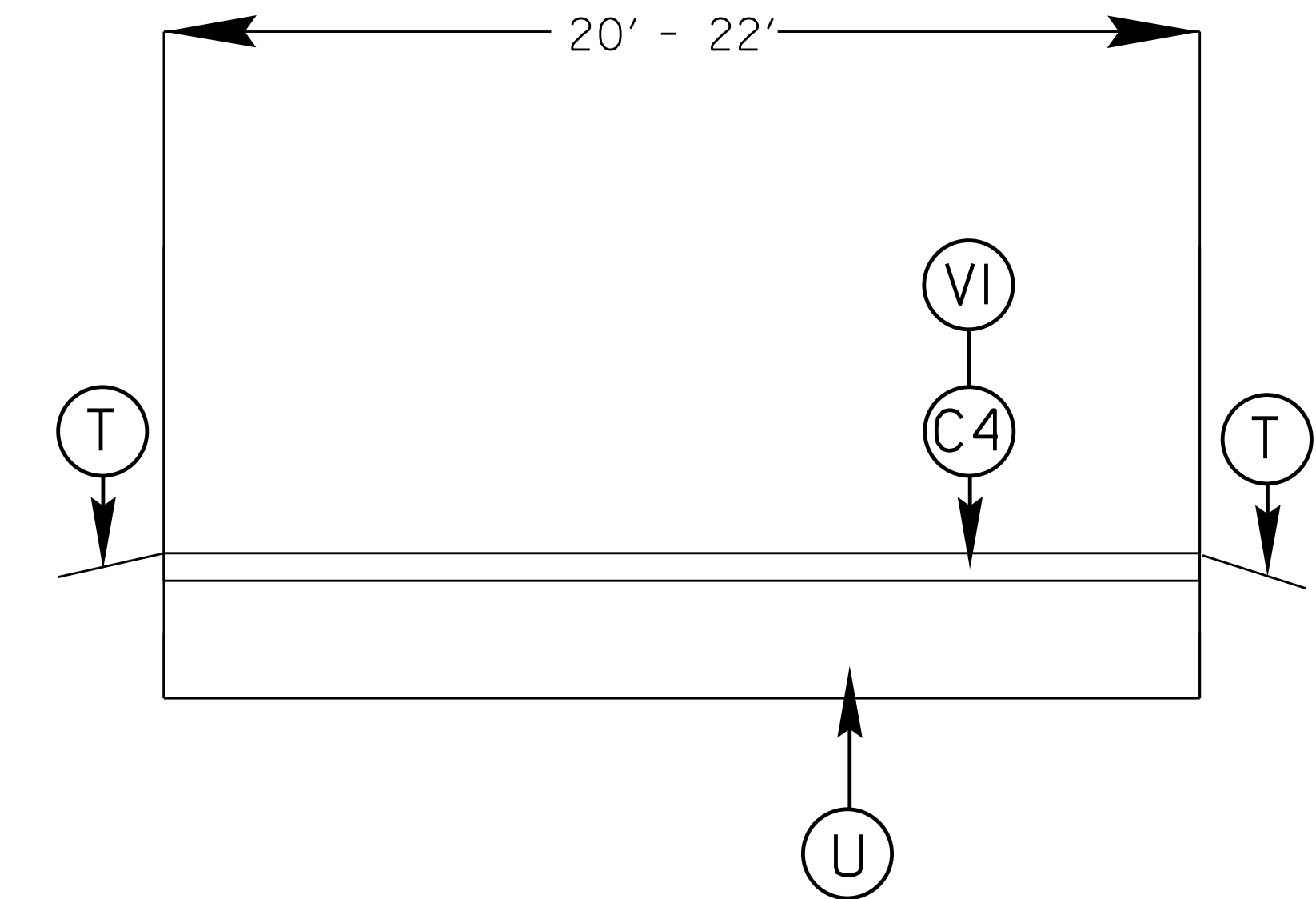
NCDOT 68 Unit

| | | | |
|---------------------|-----------------------------|-------------|--------------|
| STATE | STATE PROJECT REFERENCE NO. | SHEET NO. | TOTAL SHEETS |
| N.C. | 2022CPT.14.16.10881 | 9 | |
| STATE PROJ. NO. | F. A. PROJ. NO. | DESCRIPTION | |
| 2022CPT.14.16.20881 | | | |

TYPICAL 1



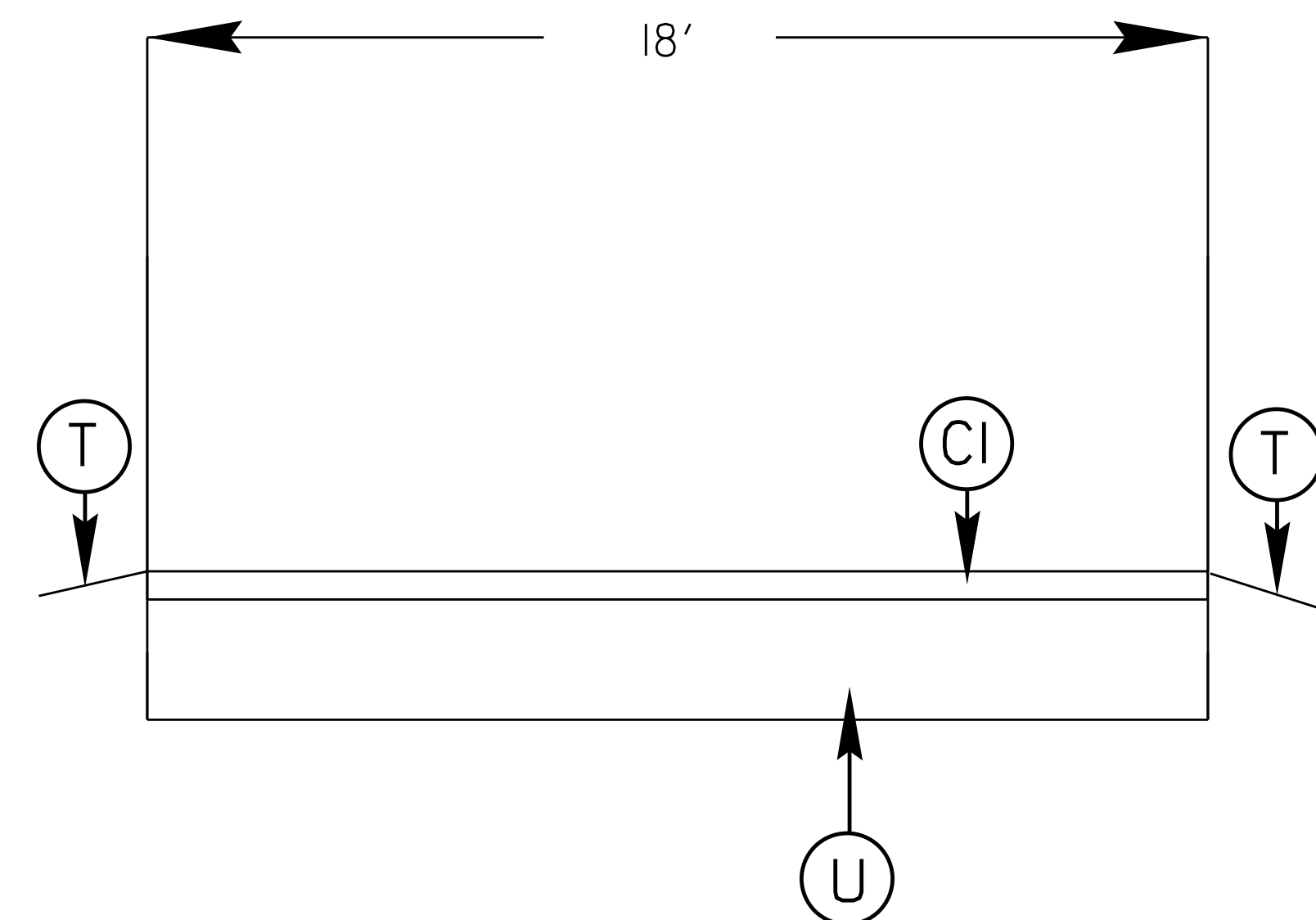
TYPICAL 2



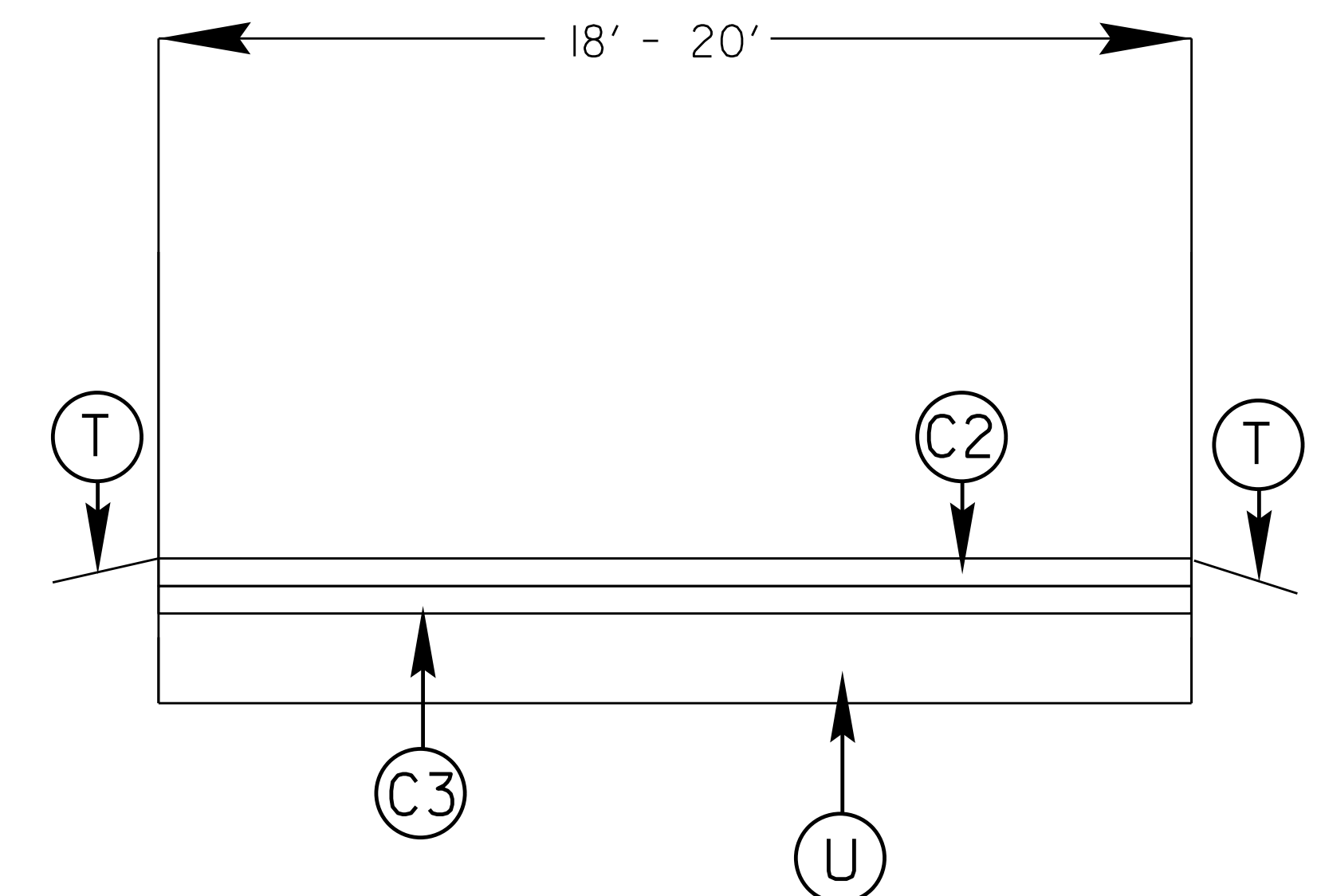
SURFACING SCHEDULE

| ITEM NO | DESCRIPTION |
|---------|---|
| C1 | PROP. APPROX. 1 1/2" ASPHALT CONCRETE SURFACE COURSE, TYPE S9.5C AT AN AVERAGE RATE OF 168 LBS.PER.SQ.YD |
| C2 | PROP. APPROX. 1 1/4" ASPHALT CONCRETE SURFACE COURSE, TYPE S9.5B AT AN AVERAGE RATE OF 137.5 LBS.PER.SQ.YD |
| C3 | PROP. APPROX. 3/4" ASPHALT CONCRETE SURFACE COURSE, (LEVELING) TYPE S9.5B AT AN AVERAGE RATE OF 82.5 LBS PER SQ.YD. |
| C4 | PROP. APPROX. 1 1/2" ASPHALT CONCRETE SURFACE COURSE, TYPE S9.5B AT AN AVERAGE RATE OF 168 LBS.PER.SQ.YD |
| D1 | PROP. APPROX. 2 1/2" ASPHALT CONCRETE INTERMEDIATE COURSE, TYPE I19.0C AT AN AVERAGE RATE OF 285 LBS PER SQ.YD. |
| VI | MILLED ASPHALT PAVEMENT 1 1/2" IN DEPTH IN LOCATIONS AS DIRECTED BY PROJECT ENGINEER |
| T | SHOULDER RECONSTRUCTION |
| U | EXISTING ASPHALT |

TYPICAL 3



TYPICAL 4

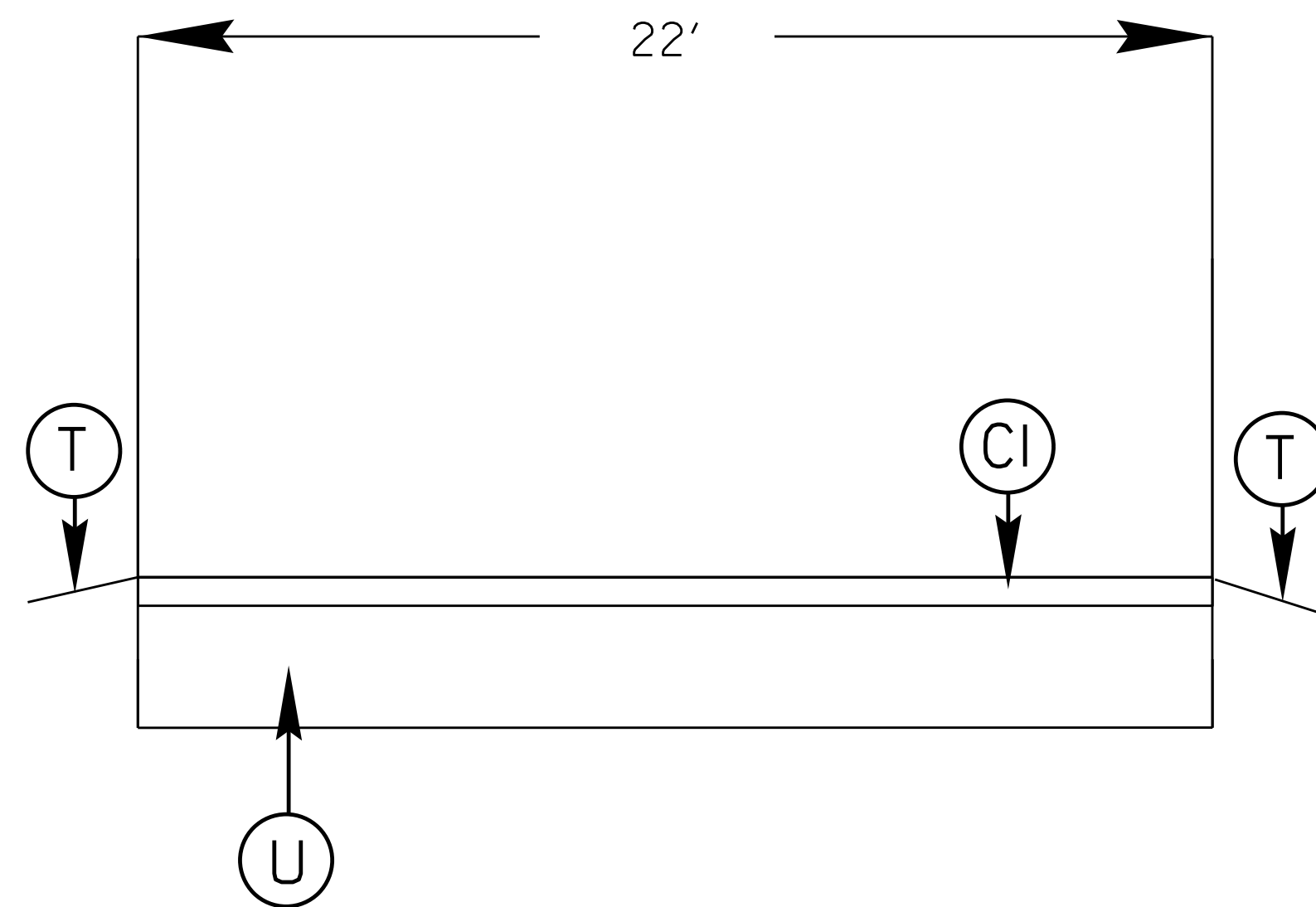


| | | | |
|---------------------|-----------------------------|-------------|--------------|
| STATE | STATE PROJECT REFERENCE NO. | SHEET NO. | TOTAL SHEETS |
| N.C. | 2022CPT.14.16.10881 | 10 | |
| STATE PROJ. NO. | F. A. PROJ. NO. | DESCRIPTION | |
| 2022CPT.14.16.20881 | | | |
| | | | |

SURFACING SCHEDULE

| ITEM NO | DESCRIPTION |
|---------|---|
| C1 | PROP. APPROX. 1 1/2" ASPHALT CONCRETE SURFACE COURSE, TYPE S9.5C AT AN AVERAGE RATE OF 168 LBS.PER.SQ.YD |
| C2 | PROP. APPROX. 1 1/4" ASPHALT CONCRETE SURFACE COURSE, TYPE S9.5B AT AN AVERAGE RATE OF 137.5 LBS.PER.SQ.YD |
| C3 | PROP. APPROX. 3/4" ASPHALT CONCRETE SURFACE COURSE, (LEVELING) TYPE S9.5B AT AN AVERAGE RATE OF 82.5 LBS PER SQ.YD. |
| C4 | PROP. APPROX. 1 1/2" ASPHALT CONCRETE SURFACE COURSE, TYPE S9.5B AT AN AVERAGE RATE OF 168 LBS.PER.SQ.YD |
| D1 | PROP. APPROX. 2 1/2" ASPHALT CONCRETE INTERMEDIATE COURSE, TYPE I19.0C AT AN AVERAGE RATE OF 285 LBS PER SQ.YD. |
| V1 | MILLED ASPHALT PAVEMENT 1 1/2" IN DEPTH IN LOCATIONS AS DIRECTED BY PROJECT ENGINEER |
| T | SHOULDER RECONSTRUCTION |
| U | EXISTING ASPHALT |

TYPICAL 5



CONTRACT: DN00787

09/08/09

| | | |
|---|-----------|-----------|
| PROJECT NO. | SHEET NO. | TOTAL NO. |
| 2022CPT.14.16.10881, 2022CPT.14.16.20881 | 11 | |

SUMMARY OF QUANTITIES

| PROJECT NO | COUNTY | MAP NO | ROUTE | DESCRIPTION | TYP NO | LANES | LANE TYPE | FINAL SURFACE TESTING REQUIRED | WARM MIX ASPHALT REQUIRED | LENGTH | WIDTH | 1245000000-E | 1297000000-E | 1308000000-E | 1330000000-E | 1519000000-E | 1520000000-E | 1523000000-E | 1575000000-E | 1704000000-E | 2549000000-E | 2591000000-E | 2605000000-N | 2613000000-N | 2800000000-N | 2815000000-N | 2830000000-N | 2845000000-N | 4600000000-N | 7444000000-E | 7456000000-E | | | | | | | | | | | | | | |
|---|--------------|--------|-----------------------------------|--|--------|-------|-----------|--------------------------------|---------------------------|--------|-------|-------------------------|----------------|--------------------|--------------------|------------------------|-------------------------|------------------------|------------------------------|----------------------------|---------------------|----------------------|--------------|-------------------------------|---------------------|--------------------|------------------|----------------------------|---|----------------|---------------|-----------|-----------|--------------|------------|------------|------------|--|--|--|--|--|--|--|--|
| | | | | | | | | | | | | SHOULDER RECONSTRUCTION | 1 1/2" MILLING | 0" TO 1.5" MILLING | INCIDENTAL MILLING | SURFACE COURSE, \$9.5B | LEVELING COURSE, \$9.5B | SURFACE COURSE, \$9.5C | ASPHALT BINDER FOR PLANT MIX | PATCHING EXISTING PAVEMENT | 2'-6" CURB & GUTTER | 4" CONCRETE SIDEWALK | CURB RAMPS | REMOVE AND REPLACE CURB RAMPS | ADJ. OF CATCH BASIN | ADJ. OF DROP INLET | ADJ. OF MANHOLES | ADJ. OF METER OR VALVE BOX | GENERIC TRAFFIC CONTROL ITEM TEMPORARY CURB RAMPS | INDUCTIVE LOOP | LEAD-IN CABLE | | | | | | | | | | | | | | |
| | | | | | | | | | | | | MI | FT | SMI | SY | SY | SY | TONS | TONS | TONS | TONS | TONS | LF | SY | EA | EA | EA | EA | EA | EA | EA | EA | EA | EA | | | | | | | | | | | |
| 2022CPT.14.16.10881 | Transylvania | 1 | US 64 (ROSMAN HWY) | FROM END OF DIVIDED HWY (0.16 MILES E. OF SR 1160) TO SR 1116 (N. COUNTRY CLUB RD) | 1 | 5 | MU | NO | NO | 1.88 | 60 | | 67,038 | | | | | 5,722 | 343 | | | | | | | | | | | | | 316 | 211 | | | | | | | | | | | | |
| TOTAL FOR MAP NO. 1 | | | | | | | | | | | | 1.88 | | | 67,038 | | | | | 5,722 | 343 | | | | | | | 2 | 1 | | | | | | 316 | 211 | | | | | | | | | |
| TOTAL FOR PROJ NO. 2022CPT.14.16.10881 | | | | | | | | | | | | 1.88 | | | 67,038 | | | | | 5,722 | 343 | | | | | | | | 2 | 1 | | | | | | 316 | 211 | | | | | | | | |
| 2022CPT.14.16.20881 | Transylvania | 2 | SR 1107 (EAST FORK RD) | FROM SR 1105 (GLADY FORK RD) TO SR 1103 (WALNUT HOLLOW RD) | 4 | 2 | 2WU | NO | NO | 1.4 | 20 | 2.80 | | | | 1,230 | 680 | | 128 | 263 | | | | | | | | | | | | | | | | | | | | | | | | | |
| TOTAL FOR MAP NO. 2 | | | | | | | | | | | | 1.4 | | | 2.80 | | | 1,230 | 680 | | 128 | 263 | | | | | | | | | | | | | | | | | | | | | | | |
| 2022CPT.14.16.20881 | Transylvania | 3 | SR 1107 (EAST FORK RD) | FROM SR 1103 (WALNUT HOLLOW RD) TO US 178 | 4 | 2 | 2WU | NO | NO | 3.68 | 20 | 7.36 | 420 | 445 | | 3,050 | 1,840 | | 328 | | | | | | | | | | | | | | | | | | | | | | | | | | |
| TOTAL FOR MAP NO. 3 | | | | | | | | | | | | 3.68 | | | 7.36 | 420 | 445 | | 3,050 | 1,840 | | 328 | | | | | | | | | | | | | | | | | | | | | | | |
| 2022CPT.14.16.20881 | Transylvania | 4 | SR 1544 (EAST FRENCH BROAD ST) | FROM US 64 (N. BROAD STREET) TO FRANKLIN ST. | 2 | 2 | 2WU | NO | NO | 0.36 | 20 | | 4,367 | | | 373 | | | 25 | | 30 | 17 | | | | | | | | | | | | | | | | | | | | | | | |
| TOTAL FOR MAP NO. 4 | | | | | | | | | | | | 0.36 | | | 4,367 | | | 373 | | 25 | 30 | 17 | | | | | | 4 | | | | | | | | | | | | | | | | | |
| 2022CPT.14.16.20881 | Transylvania | 5 | SR 1544 (EAST FRENCH BROAD ST) | FROM FRANKLIN ST TO SR 1546 (PARK AVE) | | 2 | MD | NO | NO | 0.198 | 19 | | 2,432 | | | 205 | | | 14 | | 30 | | | | | | | | | | | | | | | | | | | | | | | | |
| TOTAL FOR MAP NO. 5 | | | | | | | | | | | | 0.198 | | | 2,432 | | | 205 | | 14 | 30 | | | | | | | 2 | | | | | | | | | | | | | | | | | |
| 2022CPT.14.16.20881 | Transylvania | 6 | SR 1342 (LAKE SAGA RD.) | FROM SR 1344 (CASHIERS VALLEY RD.) TO EOP. | 3 | 2 | 2WU | NO | NO | 0.21 | 18 | | | | | 156 | | | 10 | | 38 | | | | | | | | | | | | | | | | | | | | | | | | |
| TOTAL FOR MAP NO. 6 | | | | | | | | | | | | 0.21 | | | | | | 156 | | 10 | 38 | | | | | | | | | | | | | | | | | | | | | | | | |
| 2022CPT.14.16.20881 | Transylvania | 7 | SR 1615 (MOUNTAIN INDUSTRIAL DR.) | FROM SR 1504 (OLD HENDERSONVILLE RD.) TO EOP. | 5 | 2 | 2WU | NO | NO | 0.36 | 22 | 0.68 | | | | | | | 391 | 23 | 50 | | | | | | | | | | | | | | | | | | | | | | | | |
| TOTAL FOR MAP NO. 7 | | | | | | | | | | | | 0.36 | | | 0.68 | | | | | 391 | 23 | 50 | | | | | | | | | | | | | | | | | | | | | | | |
| 2022CPT.14.16.20881 | Transylvania | 8 | SR 1346 (NICHOLSON CREEK RD.) | FROM US 64 TO SR 1344 (CASHIERS VALLEY RD.) | 4 | 2 | 2WU | NO | NO | 0.62 | 20 | 1.24 | | | | 225 | 429 | 255 | 46 | 115 | | | | | | | | | | | | | | | | | | | | | | | | | |
| TOTAL FOR MAP NO. 8 | | | | | | | | | | | | 0.62 | | | 1.24 | | | 225 | 429 | 255 | 46 | 115 | | | | | | | | | | | | | | | | | | | | | | | |
| 2022CPT.14.16.20881 | Transylvania | 9 | SR 1139 (OLD TOXAWAY RD.) | FROM US 178 (PICKENS HWY) TO HOWELL RD | 4 | 2 | 2WU | NO | NO | 1.3 | 20 | 2.60 | | | | 1,070 | 641 | | 115 | 464 | | | | | | | | | | | | | | | | | | | | | | | | | |
| TOTAL FOR MAP NO. 9 | | | | | | | | | | | | 1.3 | | | 2.60 | | | 1,070 | 641 | | 115 | 464 | | | | | | | | | | | | | | | | | | | | | | | |
| 2022CPT.14.16.20881 | Transylvania | 10 | SR 1351 (WHITMIRE ST) | FROM RAILROAD AVE TO 0.18 MILES WEST OF SR 1352 (BURRELL MTN RD) | 2 | 2 | 2WU | NO | NO | 0.4 | 22 | | 5,163 | | | 426 | | | 29 | 184 | 50 | 50 | 2 | 7 | 4 | 1 | 8 | 5 | | | | | | | | | | | | | | | | | |
| TOTAL FOR MAP NO. 10 | | | | | | | | | | | | 0.4 | | | 5,163 | | | 426 | | 29 | 184 | 50 | 50 | 2 | 7 | 4 | 1 | 8 | 5 | | | | | | | | | | | | | | | | |
| TOTAL FOR PROJ NO. 2022CPT.14.16.20881 | | | | | | | | | | | | 8.528 | | | 14.68 | | | 12,382 | 445 | 225 | 6,939 | 3,416 | 391 | 718 | 1,144 | 80 | 67 | 2 | 13 | 4 | 1 | 19 | 15 | 13.00 | 122 | 21 | | | | | | | | | |
| GRAND TOTAL | | | | | | | | | | | | 10.408 | | | 14.68 | | | 79,420 | 445 | 225 | 6,939 | 3,416 | 6,113 | 1,061 | 1,144 | 80 | 67 | 2 | 13 | 4 | 1 | 21 | 16 | 13.00 | 438 | 232 | | | | | | | | | |

| PROJECT NO. | SHEET NO. | TOTAL NO. |
|---|-----------|-----------|
| 2022CPT.14.16.10881, 2022CPT.14.16.20881 | 12 | |

THERMOPLASTIC AND PAINT QUANTITIES

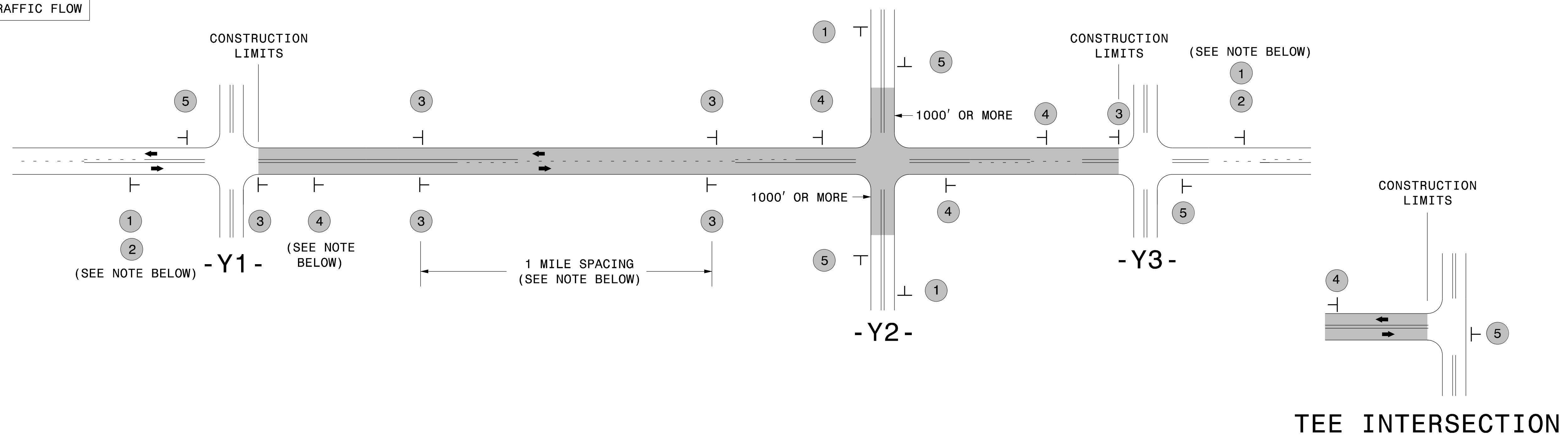
| PROJECT NO | COUNTY | MAP NO | ROUTE | DESCRIPTION | TYP NO | LANES | LANE TYPE | LENGTH | WIDTH | 4413000000-E | 4447000000-E | 4457000000-N | 4725000000-E | | 4810000000-E | | 4835000000-E | 4890000000-E | | 4891000000-E | | |
|---|--------------|--------|-----------------------------------|--|--------|-------|-----------|--------|---------------|---|---------------------------------|---------------------------|----------------------|----------------------|----------------|-----------------|-----------------|--|--|-------------------------|------------|--|
| | | | | | | | | | | WORK ZONE ADVANCE/GENERAL WARNING SIGNING | PEDESTRIAN CHANNELIZING DEVICES | TEMPORARY TRAFFIC CONTROL | THERMO LT ARROW 90 M | THERMO RT ARROW 90 M | 4" WHITE PAINT | 4" YELLOW PAINT | 24" WHITE PAINT | GENERIC PAVE. MARK ITEM 4" X 50 MIL WHITE THERMO | GENERIC PAVE. MARK ITEM 4" X 50 MIL YELLOW THERMO. | 24" X 90 M WHITE THERMO | | |
| | | | | | | | | | MI | FT | SF | LF | LS | EA | EA | LF | LF | LF | LF | LF | | |
| 2022CPT.14.16.10881 | Transylvania | 1 | US 64 (ROSMAN HWY) | FROM END OF DIVIDED HWY (0.16 MILES E. OF SR 1160) TO SR 1116 (N. COUNRTY CLUB RD) | 1 | 5 | MU | 1.88 | 60 | 126 | | | 0.25 | 39 | 28 | | | | 32,701 | 24,800 | 195 | |
| TOTAL FOR MAP NO. 1 | | | | | | | | | 1.88 | | 126 | | 0.25 | 39 | 28 | | | | 32,701 | 24,800 | 195 | |
| TOTAL FOR PROJ NO. 2022CPT.14.16.10881 | | | | | | | | | 1.88 | | 126 | | 0.25 | 39 | 28 | | | | 32,701 | 24,800 | 195 | |
| | | | | | | | | | | | | | 67 | | | | | | 57,501 | | | |
| 2022CPT.14.16.20881 | Transylvania | 2 | SR 1107 (EAST FORK RD) | FROM SR 1105 (GLADY FORK RD) TO SR 1103 (WALNUT HOLLOW RD) | 4 | 2 | 2WU | 1.4 | 20 | 146 | | | 0.75 | | | 29,568 | 29,568 | | | | | |
| TOTAL FOR MAP NO. 2 | | | | | | | | | 1.4 | | 146 | | 0.75 | | | 29,568 | 29,568 | | | | | |
| 2022CPT.14.16.20881 | Transylvania | 3 | SR 1107 (EAST FORK RD) | FROM SR 1103 (WALNUT HOLLOW RD) TO US 178 | 4 | 2 | 2WU | 3.68 | 20 | 375 | | | | | | 77,723 | 77,723 | | | | | |
| TOTAL FOR MAP NO. 3 | | | | | | | | | 3.68 | | 375 | | | | 77,723 | 77,723 | | | | | | |
| 2022CPT.14.16.20881 | Transylvania | 4 | SR 1544 (EAST FRENCH BROAD ST) | FROM US 64 (N. BROAD STREET) TO FRANKLIN ST. | 2 | 2 | 2WU | 0.36 | 20 | 26 | | | | | | | 7,860 | 60 | | | | |
| TOTAL FOR MAP NO. 4 | | | | | | | | | 0.36 | | 26 | | | | | 7,860 | 60 | | | | | |
| 2022CPT.14.16.20881 | Transylvania | 5 | SR 1544 (EAST FRENCH BROAD ST) | FROM FRANKLIN ST TO SR 1546 (PARK AVE) | | 2 | MD | 0.198 | 19 | 26 | | | | | | 2,091 | 4,182 | | | | | |
| TOTAL FOR MAP NO. 5 | | | | | | | | | 0.198 | | 26 | | | | 2,091 | 4,182 | | | | | | |
| 2022CPT.14.16.20881 | Transylvania | 6 | SR 1342 (LAKE SAGA RD.) | FROM SR 1344 (CASHIERS VALLEY RD.) TO EOP. | 3 | 2 | 2WU | 0.21 | 18 | 21 | | | | | | 4,436 | 4,436 | | | | | |
| TOTAL FOR MAP NO. 6 | | | | | | | | | 0.21 | | 21 | | | | 4,436 | 4,436 | | | | | | |
| 2022CPT.14.16.20881 | Transylvania | 7 | SR 1615 (MOUNTAIN INDUSTRIAL DR.) | FROM SR 1504 (OLD HENDERSONVILLE RD.) TO EOP. | 5 | 2 | 2WU | 0.36 | 22 | 36 | | | | | | 7,476 | 7,476 | | | | | |
| TOTAL FOR MAP NO. 7 | | | | | | | | | 0.36 | | 36 | | | | 7,476 | 7,476 | | | | | | |
| 2022CPT.14.16.20881 | Transylvania | 8 | SR 1346 (NICHOLSON CREEK RD.) | FROM US 64 TO SR 1344 (CASHIERS VALLEY RD.) | 4 | 2 | 2WU | 0.62 | 20 | 1 | | | | | | 13,092 | 13,092 | | | | | |
| TOTAL FOR MAP NO. 8 | | | | | | | | | 0.62 | | 1 | | | | 13,092 | 13,092 | | | | | | |
| 2022CPT.14.16.20881 | Transylvania | 9 | SR 1139 (OLD TOXAWAY RD.) | FROM US 178 (PICKENS HWY) TO HOWELL RD | 4 | 2 | 2WU | 1.3 | 20 | 132 | | | | | | 27,456 | 27,456 | | | | | |
| TOTAL FOR MAP NO. 9 | | | | | | | | | 1.3 | | 132 | | | | 27,456 | 27,456 | | | | | | |
| 2022CPT.14.16.20881 | Transylvania | 10 | SR 1351 (WHITMIRE ST) | FROM RAILROAD AVE TO 0.18 MILES WEST OF SR 1352 (BURRELL MTN RD) | 2 | 2 | 2WU | 0.4 | 22 | 41 | 50.00 | | | | | 3,600 | 8,448 | 40 | | | | |
| TOTAL FOR MAP NO. 10 | | | | | | | | | 0.4 | | 41 | 50 | | | 3,600 | 8,448 | 40 | | | | | |
| TOTAL FOR PROJ NO. 2022CPT.14.16.20881 | | | | | | | | | 8.528 | | 804 | 50 | 0.75 | | 165,442 | 180,241 | 100 | | | | | |
| | | | | | | | | | | | | | 345,683 | | | | | | | | | |
| GRAND TOTAL | | | | | | | | | 10.408 | | 930 | 50 | 1 | 39 | 28 | 165,442 | 180,241 | 100 | 32,701 | 24,800 | 195 | |
| | | | | | | | | | | | | | 67 | | 345,683 | | | | 57,501 | | | |

SIGNING FOR RESURFACING PROJECTS

LEGEND

┆ STATIONARY SIGN

← DIRECTION OF TRAFFIC FLOW



MAINLINE (-L-) SIGNING

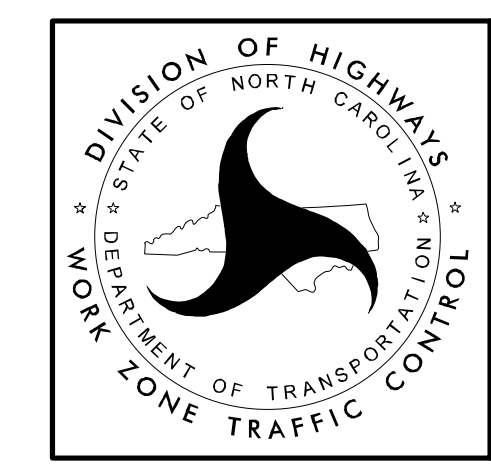
-Y- LINE SIGNING

| | | | | |
|---|---|---|---|--|
| SIGNING NOTES AND PLACEMENT PER DIRECTION | 1 | W20-1 48" X 48" | PLACE 1000' PRIOR TO BEGINNING OF CONSTRUCTION LIMITS. ONLY USED ON -Y- LINES IF RESURFACING LIMITS EXTEND 1000' ALONG -Y- LINE. | <p>NO REQUIRED STATIONARY SIGNING FOR THE FOLLOWING -Y- LINE CONDITIONS:</p> <ol style="list-style-type: none"> 1) LESS THAN 1000' OF RESURFACING ALONG -Y- LINE 2) SUBDIVISION ROADS 3) DEAD END ROADS <p>WHEN PAVING/CONSTRUCTION ACTIVITIES PROCEED ACROSS AN UNSIGNED -Y- LINE, PORTABLE ADVANCE WARNING SIGNS SHALL BE USED ALONG THE -Y- LINE AS SHOWN BELOW. REMOVE UPON COMPLETION OF WORK.</p> <div style="display: flex; justify-content: space-around;"> <div style="text-align: center;"> W20-1 48" X 48" </div> <div style="text-align: center;"> W20-7 A 48" X 48" </div> </div> <p>PLACED 500' IN ADVANCE OF FLAGGER.</p> <p>PLACED 250' IN ADVANCE OF FLAGGER.</p> |
| | 2 | NEXT XX MILES W7-3aP 24" X 18" | #2 SIGN ONLY USED WHEN CONSTRUCTION LIMITS ARE 2 OR MORE MILES IN LENGTH. ROUND UP TO NEXT WHOLE NUMBER. (NO FRACTIONAL OR DECIMAL NUMBERS) | |
| | 3 | SP 13107 48" X 48" | <ul style="list-style-type: none"> - PLACE INITIALLY AT THE CONSTRUCTION LIMITS AND SPACE 1 MILE APART THEREAFTER. - AT TEE INTERSECTIONS INSTALL INITIALLY 1/2 MILE FROM INTERSECTION AND SPACE 1 MILE APART THEREAFTER. | |
| | 4 | SP 13106 48" X 48" | <ul style="list-style-type: none"> - THESE ARE FOR -Y- LINES THAT ARE "THROUGH" ROADWAYS. - DEAD END AND SUBDIVISION ROADS ARE NOT "THROUGH" ROADWAYS. - INSTALL 500' +/- FROM EACH -Y- LINE APPROACH AS SHOWN ABOVE. - FOR MULTIPLE -Y- LINES THAT ARE SEPARATED BY 0.25 MILES OR LESS, TREAT AS A SINGLE UNIT AND INSTALL WITHIN 500' OF EACH APPROACH. - A MAXIMUM OF 2 SIGN SETS PER MILE. DO NOT INSTALL WHEN -Y- LINES ARE WITHIN 0.5 MILES FROM "END ROAD WORK" SIGN. - FOR TEE INTERSECTIONS, INSTALL WITHIN 500' +/- OF THE INTERSECTION ALONG -L- LINE. | |
| | 5 | END ROAD WORK G20-2 A 48" X 24" | PLACE 500' FOLLOWING THE END OF CONSTRUCTION LIMITS OR AS SHOWN WHEN WORK ENDS AT A 3-WAY TEE INTERSECTION. | |

THE ABOVE SIGNS ARE ALL THAT ARE REQUIRED FOR A CONTRACTOR TO BEGIN A RESURFACING CONTRACT. ANY ADDITIONAL SIGNS REQUESTED BY NCDOT DIVISIONS SHALL BE INSTALLED WITHIN 7 BUSINESS DAYS OF THE START OF CONTRACT WORK.

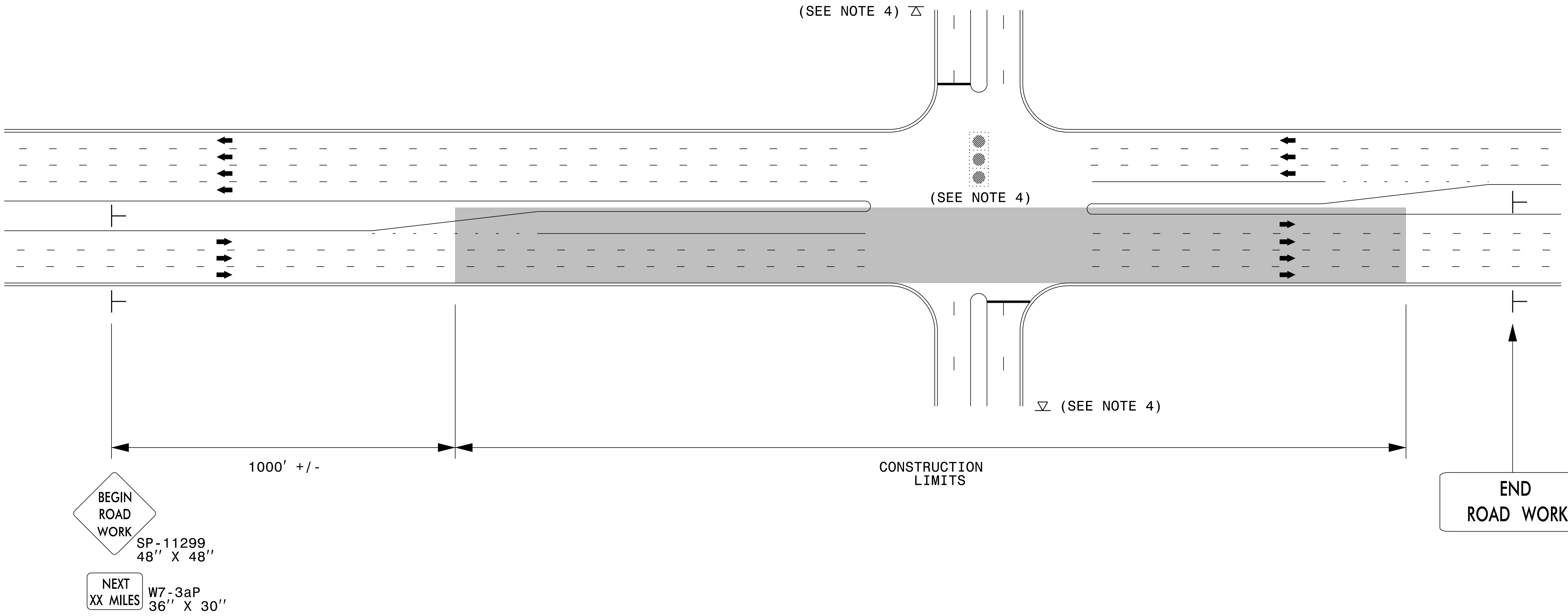
MAPS LESS THAN 2 MILES

FOR RESURFACING MAPS WITH CONSTRUCTION LIMITS LESS THAN 2 MILES IN LENGTH, NO STATIONARY SIGNS ARE REQUIRED. USE PORTABLE "ROAD UNDER CONSTRUCTION" OR "ROAD WORK AHEAD" SIGNS IN LIEU OF STATIONARY ADVANCE WARNINGS SIGNS.



ADVANCE WARNING SIGNS FOR RURAL AND SUBURBAN 2-LANE ROADWAY RESURFACING

URBAN / SUBURBAN WORKZONES



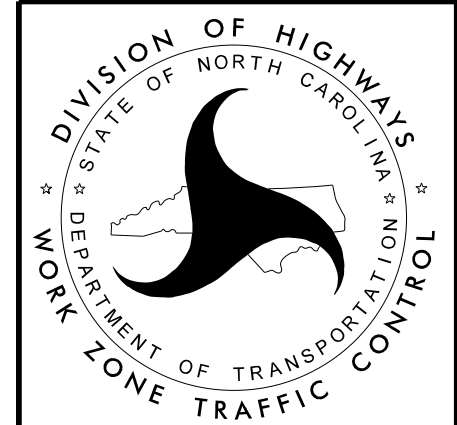
NOTES:

- 1) 48" x 48" SIZED SIGNS (SP- 11299) MAY BE REDUCED TO 36" X 36" ON ROADWAYS WITH SPEED LIMITS OF 40 MPH OR LESS.
- 2) MOUNT SIGNS THAT ARE LARGER THAN 10 SQUARE FEET IN AREA ON TWO OR MORE WOOD OR U-CHANNEL SUPPORTS. PERFORATED SQUARE TUBING SUPPORT SYSTEMS MAY SUPPORT LARGER AREAS ON A SINGLE SUPPORT. FOLLOW MANUFACTURER'S RECOMMENDATIONS. THESE SYSTEMS SHALL BE NCHRP 350 COMPLIANT AND NCDOT APPROVED.
- 3) ADVANCE WARNING SIGNS NOT REQUIRED ON NON-SIGNALIZED SIDE STREETS.
- 4) MAY USE LAW ENFORCEMENT TO CONTROL TRAFFIC AT SIGNALIZED INTERSECTIONS AS DIRECTED BY THE ENGINEER. PROVIDE PORTABLE "ROAD WORK AHEAD" (W20-1) SIGNS 500' IN ADVANCE ALONG BOTH APPROACHES FROM THE SIDE STREETS WHEN PAVING PROCEEDS THROUGH THE INTERSECTION.
- 5) LATERAL CLEARANCE AT ALL SIGN LOCATIONS SHALL BE 2' AS MEASURED FROM THE EDGE OF PAVEMENT OR THE FACE OF THE CURB. WHEN UNABLE TO OBTAIN THE LATERAL CLEARANCE WITHIN THE MEDIAN AREA USE SHOULDER MOUNTS ONLY.
- 6) SIGN MOUNT LOCATIONS SHALL NOT BLOCK SIDEWALKS OR DRIVEWAYS.
- 7) IF STATIONARY GENERAL WARNING SIGNS ARE USED, THEY WILL BE PAID FOR PER SECTION 104 OF THE NCDOT STANDARD SPECIFICATIONS AS EXTRA WORK.
- 8) IF MILLED AREAS ARE NOT PAVED BACK BY THE END OF THE WORK DAY, PORTABLE SIGNS SHALL BE USED TO WARN DRIVERS OF THE PRESENT CONDITIONS. THESE ARE TO INCLUDE, BUT NOT LIMITED TO "ROUGH ROAD" W8-8, "UNEVEN LANES" W8-11, "GROOVED PAVEMENT" W8-15 w/MOTORCYCLE PLAQUE MOUNTED BELOW. THESE ARE TO BE DOUBLE INDICATED ON MULTI-LANE ROADWAYS WITH SPEED LIMITS 45 MPH AND GREATER WHERE LATERAL CLEARANCE CAN BE OBTAINED WITHIN THE MEDIAN AREAS. THESE PORTABLE SIGNS ARE INCIDENTAL TO THE OTHER ITEMS OF WORK INCLUDED IN THE TEMPORARY TRAFFIC CONTROL (LUMP SUM) PAY ITEM.

LEGEND

┆ STATIONARY SIGN

➔ DIRECTION OF TRAFFIC FLOW



**RESURFACING ADVANCE
WARNING SIGNS FOR
URBAN / SUBURBAN
FACILITIES**

4/8/2015 C:\Users\rmgarrrett\Downloads\Resurfacing_AdvWarn_UrSu (2).dgn User:rmgarrrett